



# Product Discontinuation Notification

Document availability: **Public**

## Title: Discontinuation of certain uEye cameras with MT9J003 sensors

<b>Affected Product:</b>	IDS uEye cameras (detailed list of models in document) <ul style="list-style-type: none"><li>• Models with match code UI-149x (USB3 interface)</li><li>• Models with match code UI-549x (GigE interface)</li></ul>
<b>Document Version:</b>	1.0
<b>Release date:</b>	May 23 <sup>th</sup> 2024

## Reasons and Description of the Product Discontinuation

The supplier of the imaging sensors built into the affected IDS cameras, onsemi, decided to discontinue the production of the imaging sensor **MT9J003I12STCU-DP** and **MT9J003I12STMU-DP** by **June 22<sup>nd</sup> 2024**. For this reason, IDS has to announce the discontinuation of the camera models listed below.

Last time buy orders for the above mentioned onsemi MT9J003I12STCU-DP and MT9J003I12STMU-DP. sensors can be placed and corresponding cameras can be built.

## Recommended action for customers

IDS recommends that all customers of the models listed below promptly place their last time buy order with an appropriate volume covering the life span of the related customer projects or devices.

**For order volumes of 50 cameras or beyond the order requires to be placed before June 15<sup>th</sup> 2024 for reserving manufacturing capability.**

For any question regarding last time orders or successor models, please contact our sales team.

## Important Dates

End of Sale	Last Shipment Date	End of Support
15 <sup>th</sup> December 2024	15 <sup>th</sup> June 2025	15 <sup>th</sup> June 2028

## Alternative Cameras

Besides placing last time buy orders, IDS suggests to switch to the below listed camera models with alternative sensor in the table below.

In case of switching to uEye+ models (U3, GV) the use of IDS peak is required instead of the IDS Software Suite

We recommend evaluating the alternative new camera models.

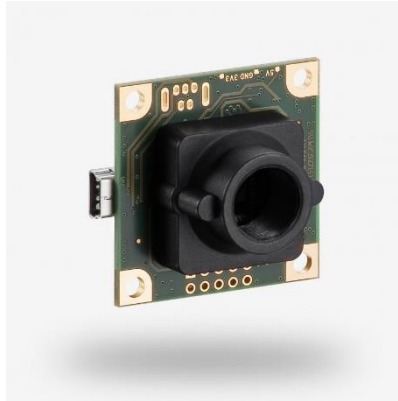
Sensor	Alternative cameras
onsemi MT9J003 (10.55 MPixel, 1.67µm, 1/2")	
Sony IMX226 (12 MPixel, 1.85µm, 1/1.7")	U3-389x (USB3), GV-589x (GigE)
Sony IMX412 (12.3 MPixel, 1.55µm, 1/2.3")	U3-38Lx (USB3)
onsemi AR2020 (19.7 MPixel, 1.4µm, 1/1.8")	U3-36Px (USB3)

## Affected Cameras

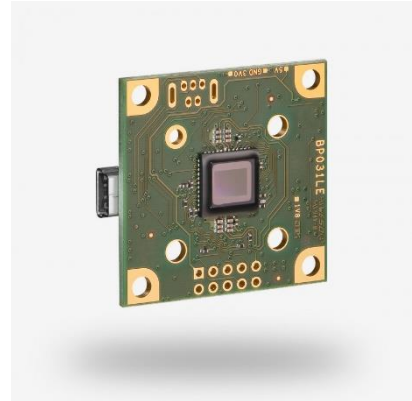
Illustrations may differ from the original.



UI-1490LE



UI-1491LE



UI-1492LE



UI-1490SE



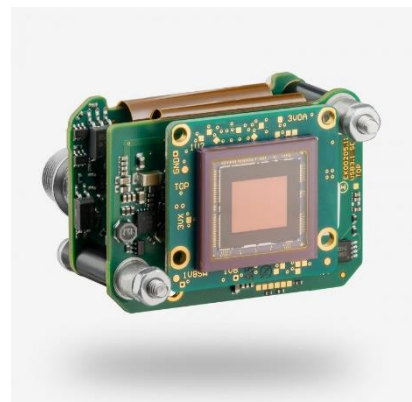
UI-5490RE



UI-5490SE



UI-5491SE



UI-5492SE



# Product Discontinuation Notification

## Affected Part Numbers

UI-149x Cameras			
AB.0010.1.41600.23	AB.0010.1.41600.24	AB.0010.1.41700.24	AB.0010.1.45300.24
AB.0010.1.45400.23	AB.0010.1.45400.24	AB.0010.1.45600.00	AB.0010.1.52200.23
AB.0010.1.52300.23	AB.0010.1.52300.24	AB.0010.1.52400.00	AB.0010.1.52500.23
AB.0010.1.52500.24	AB.0010.1.52500.25	AB00267	AB00602
AB00724	AB00782	AB01045	AB02181
AB02182	AB02911	AB02959	AB03560

UI-549x Cameras			
AB.0010.1.41900.24	AB.0010.1.41902.23	AB.0010.1.41902.24	AB.0010.1.43302.24
AB.0010.1.52800.23	AB.0010.1.52802.23	AB.0010.1.52802.24	AB.0010.1.52802.25
AB.0010.1.52902.23	AB.0010.1.55402.24	AB.0010.1.56400.24	AB00054
AB00269	AB00297	AB00307	AB00308
AB00856	AB02710	AB02730	AB03048
AB10307	AB10308	AB10856	