



Product Discontinuation Notification

Document availability: **Public**

Title: Discontinuation of certain uEye cameras with MT9P006 sensors

Affected Product:	IDS uEye cameras (detailed list of models in document) <ul style="list-style-type: none">• Models with match code UI-158x (USB 2 interface)• Models with match code UI-358x (USB 3 interface)• Models with match code UI-558x and GV-558x (GigE interface)
Document Version:	1.0
Release date:	May 23 th 2024

Reasons and Description of the Product Discontinuation

The supplier of the imaging sensors built into the affected IDS cameras, onsemi, decided to discontinue the production of the imaging sensor **MT9P006STC**. by **June 22nd 2024**. For this reason, IDS has to announce the discontinuation of the camera models listed below.

Last time buy orders for the above mentioned onsemi MT9P006STC. sensors can be placed and corresponding cameras can be built.

Recommended action for customers

IDS recommends that all customers of the models listed below promptly place their last time buy order with an appropriate volume covering the life span of the related customer projects or devices.

For order volumes of 50 cameras or beyond the order requires to be placed before June 15th 2024 for reserving manufacturing capability.

For any question regarding last time orders or successor models, please contact our sales team.

Important Dates

End of Sale	Last Shipment Date	End of Support
15 th December 2024	15 th June 2025	15 th June 2028



Product Discontinuation Notification

Alternative Cameras

Besides placing last time buy orders, IDS suggests to switch to the below listed camera models with alternative sensor in the table below.

In case of switching to uEye+ models (U3, GV) the use of IDS peak is required instead of the IDS Software Suite

We recommend evaluating the alternative new camera models.

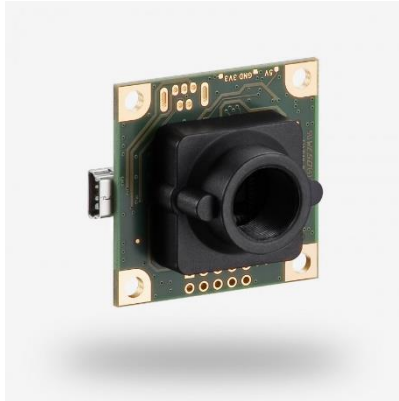
Sensor	Alternative cameras
onsemi MT9P006STC (4.92 MPixel, 2.2µm, 1/2")	
onsemi AR0521/AR0522 (5 Mpixel, 2.2µm, 1/2.5")	U3-368x (USB3)
Sony IMX178 (6.41 MPixel, 2.4µm, 1/1.8")	U3-388x (USB3), GV-588x (GigE)
Sony IMX675 (5 Mpixel, 2µm, 1/2.8")	U3-34Fx (USB3)

Affected Cameras

Illustrations may differ from the original.



UI-1580LE



UI-1581LE



UI-1582LE



UI-1580SE



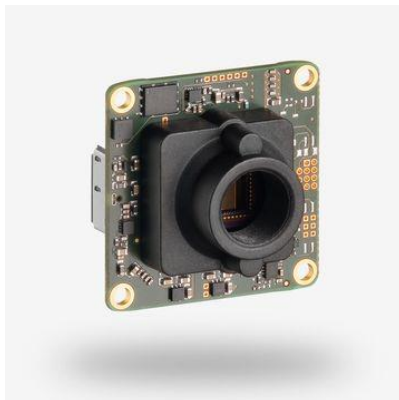
UI-3580CP



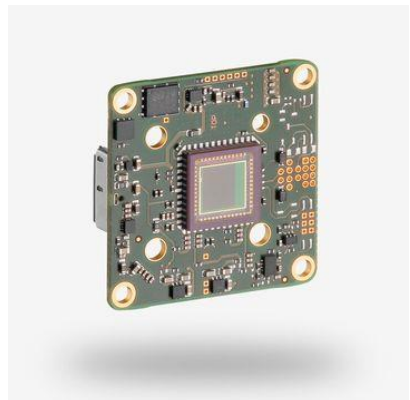
UI-3580ML



UI-3580LE



UI-3581LE



UI-3582LE



GV-5580CP
UI-5580CP



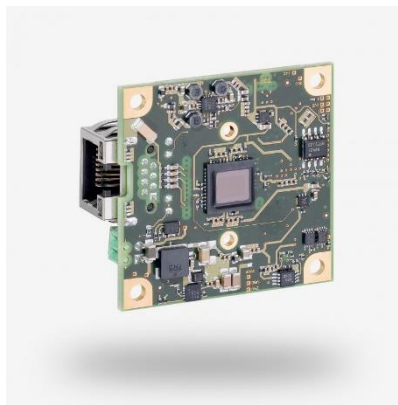
GV-5580FA
UI-5580FA



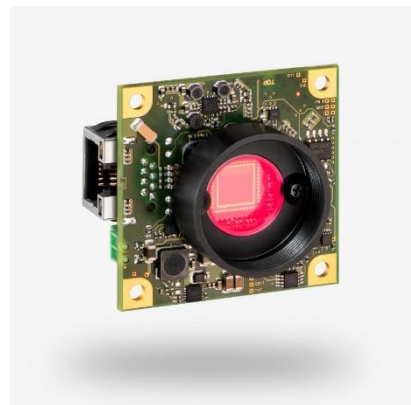
UI-5580RE



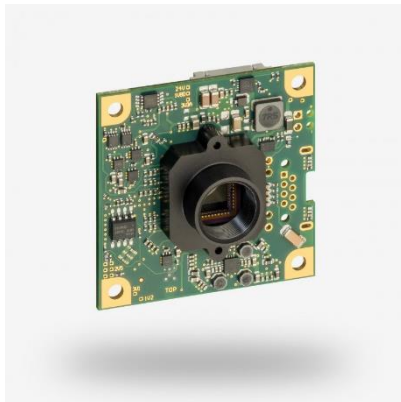
UI-5581LE



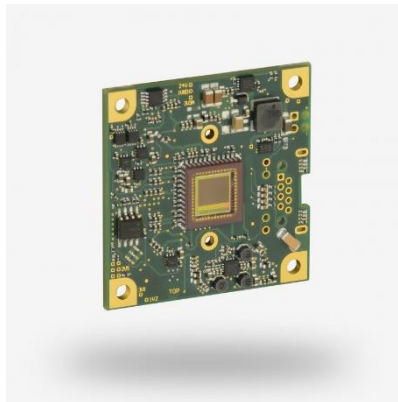
UI-5582LE



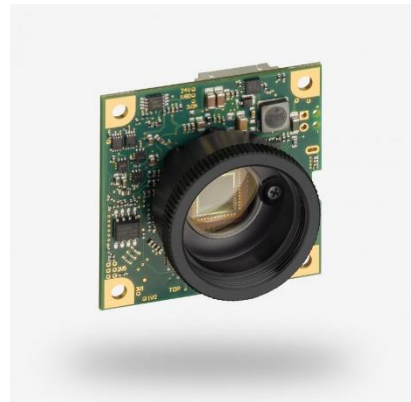
UI-5584LE



UI-5581LE MB



UI-5582LE MB



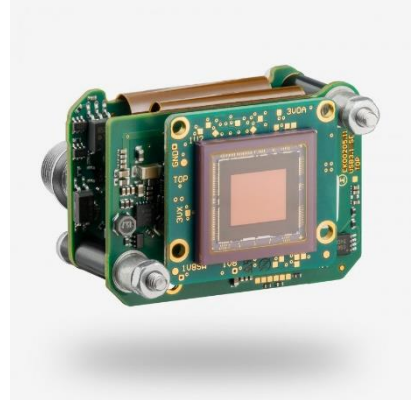
UI-5584LE MB



GV-5580SE
UI-5580SE



GV-5581SE
UI-5581SE



GV-5582SE
UI-5582SE

Affected Part Numbers

UI-158x Cameras			
1009059	AB00087	AB00088	AB00126
AB00149	AB00154	AB00155	AB00234
AB00255	AB00876	AB03486	

UI-358x Cameras			
AB00091	AB00241	AB00484	AB00486
AB00488	AB00490	AB00521	AB00555
AB00584	AB00610	AB00650	AB00654
AB00658	AB00662	AB00666	AB00670
AB00771	AB00883	AB01221	AB01222
AB01230	AB01236	AB02177	AB02180
AB02183	AB03043		

UI-558x or GV-558x Cameras			
AB00092	AB00093	AB00094	AB00310
AB00448	AB00450	AB00469	AB00677
AB02032	AB02045	AB02178	AB02216
AB02217	AB02218	AB02310	AB02311
AB02312	AB02314	AB02326	AB02327



Product Discontinuation Notification

UI-558x or GV-558x Cameras			
AB02328	AB02330	AB02539	AB10310
AB10448	AB10450	AB10469	AB12032
AB12045	AB12178	AB12216	AB12217
AB12218	AB12310	AB12311	AB12312
AB12314	AB12326	AB12327	AB12328
AB12330	AB12539		